

## 12" cover with 3 mm spine

# VER090

### FINISHED FORMAT

315 x 312 x 3 MM

### OPEN FORMAT

633 x 350 MM

### DELIVERY SPECIFICATIONS

**PDF** (pdf/x-4:2010 or ISO Coated V2 300%)

**300 DPI** Resolution

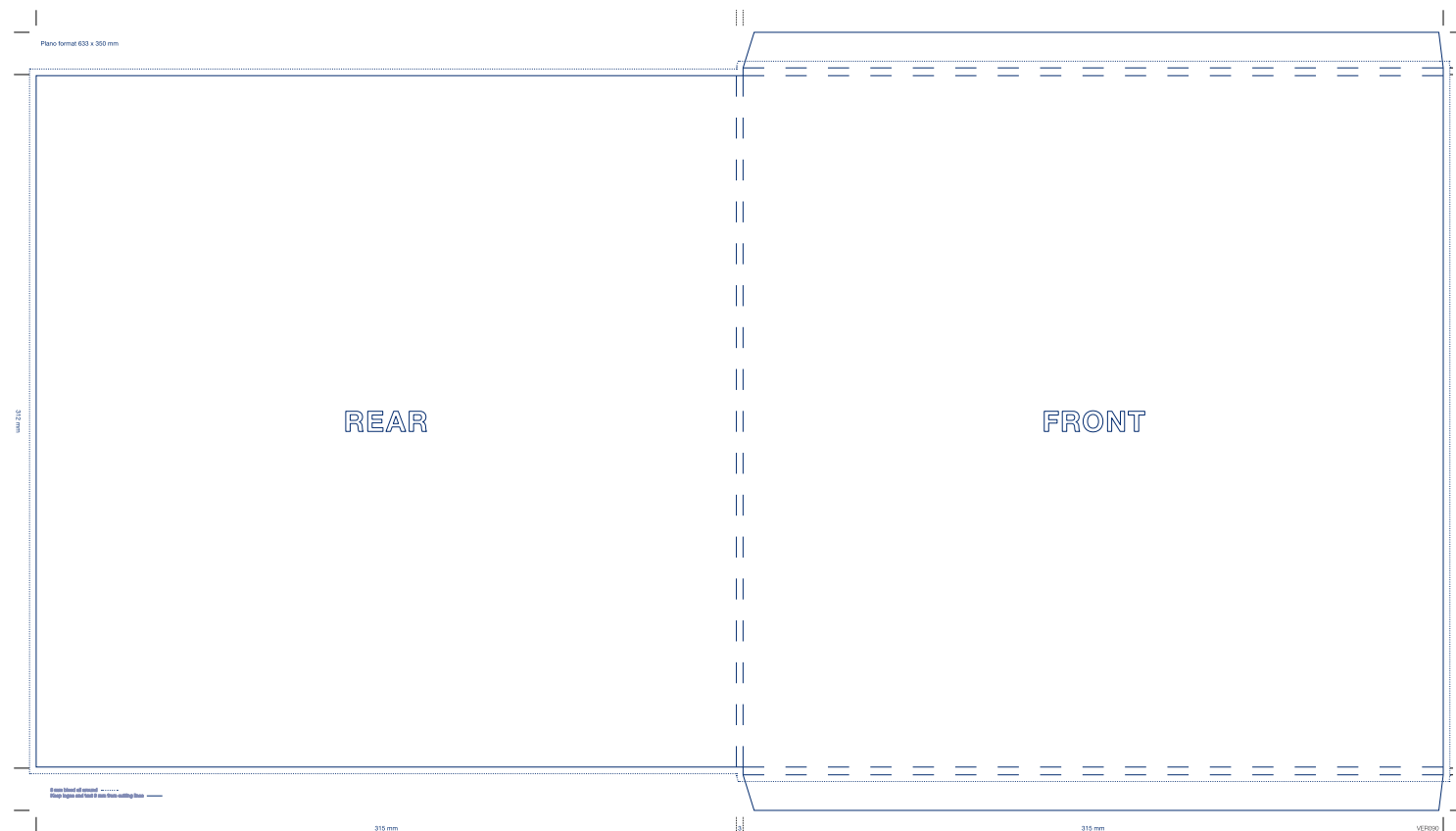
**CMYK** (RGB will be converted)

**3 MM bleed**

#### Cropmarks

Keep important information at least 2-3 mm from the cutting edge to prevent loss.  
(text, barcode, etc.)

Use the attached or separate delivered template files for layout.  
(.idml for InDesign or .pdf, suitable for other design applications)



At 30% true size. This preview is not suited for design purposes! Use the attached or separate delivered templates.

## SPECIFICATIONS